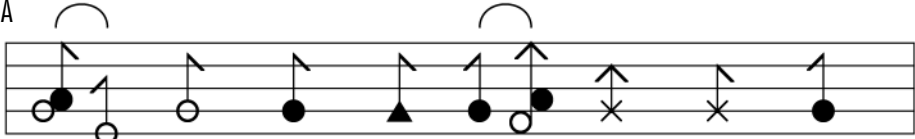


# Top secret - intro

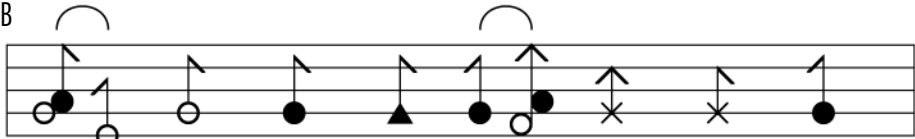
A



12

Diagram A shows a musical staff with 12 positions. The notes and symbols are: 1 (open circle), 2 (filled circle), 3 (open circle), 4 (open circle), 5 (filled circle), 6 (filled triangle), 7 (filled circle), 8 (open circle), 9 (filled circle), 10 (open circle), 11 (cross), 12 (filled circle). There are two curved lines above the staff: one from position 1 to 3, and another from position 7 to 9. Below the staff are four symbols: P (position 5), G (position 6), P (position 8), and G (position 12).

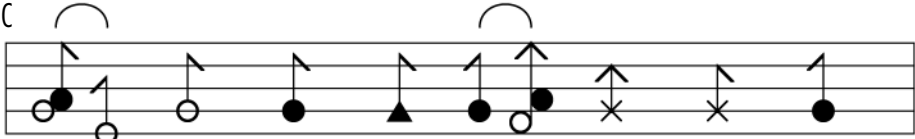
B



12

Diagram B is identical to Diagram A, showing the same sequence of notes and symbols on a 12-position staff with curved lines and symbols below.


C



12

Diagram C is identical to Diagram A, showing the same sequence of notes and symbols on a 12-position staff with curved lines and symbols below.

D



12

Diagram D shows a musical staff with 12 positions. The notes and symbols are: 1 (filled circle), 2 (open), 3 (open), 4 (open), 5 (filled circle), 6 (cross), 7 (open), 8 (open), 9 (open), 10 (filled circle), 11 (open), 12 (filled triangle). Below the staff is one symbol: P (position 5).

E

12

F

11

P

P

T

G

12

P

T

T

P

H

12

T

T

T

T

I

12

J

21

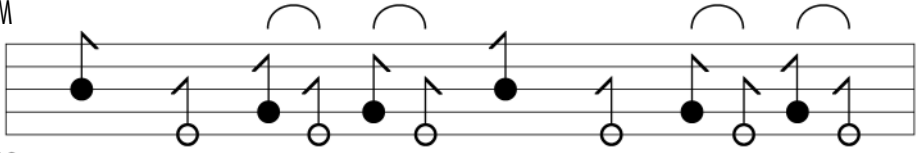
K

12

L

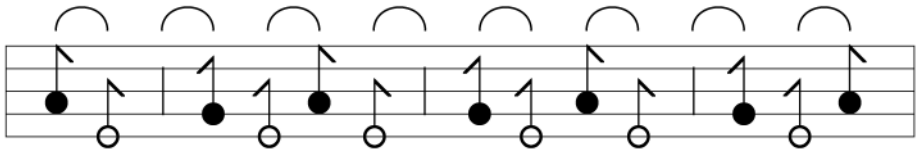
1  
11

M



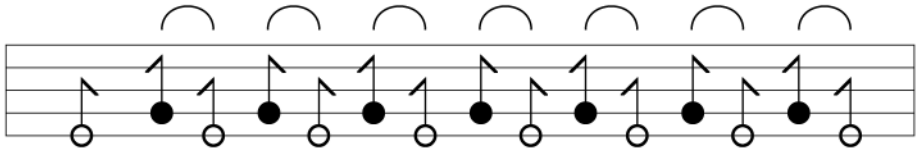
12

0



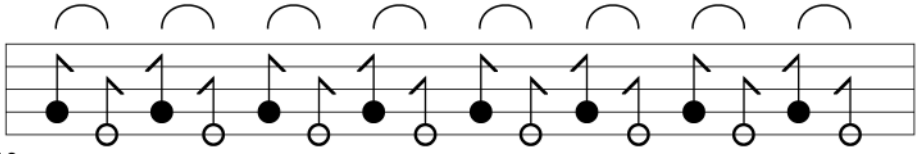
12

P



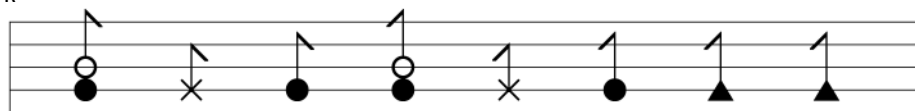
1  
11

Q



12

R



12



S



12



T



12



U



12

